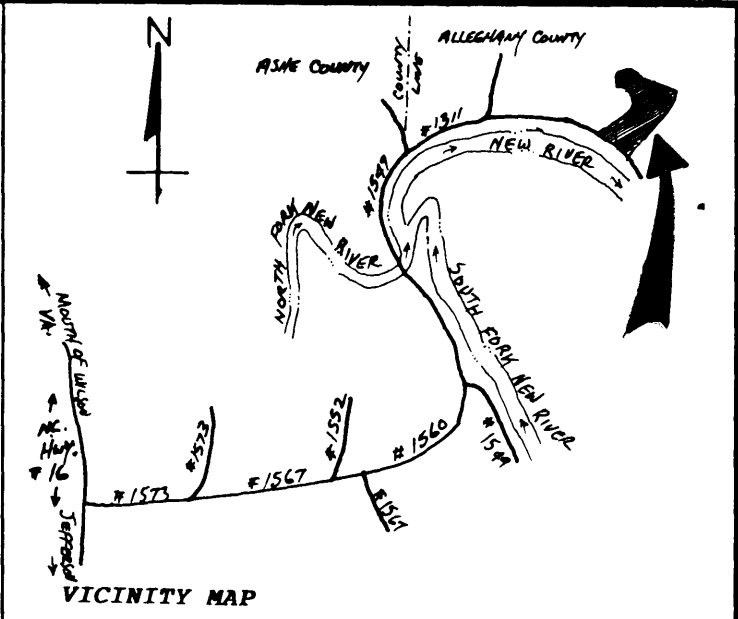
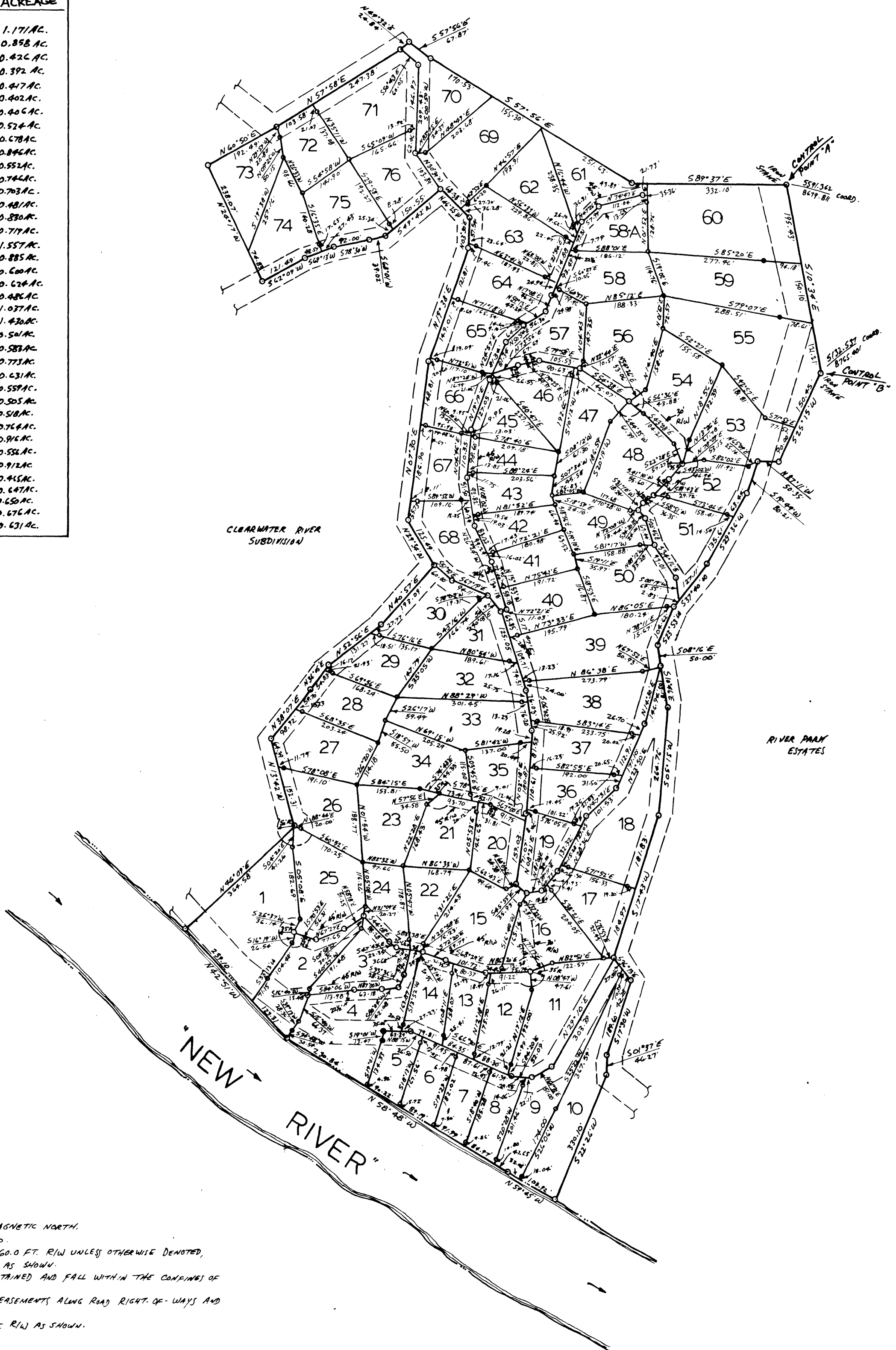
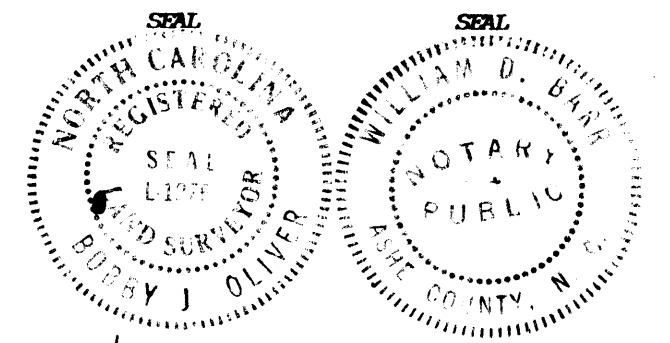


LOT #	ACREAGE	LOT #	ACREAGE
1	1.378 AC.	39	1.171 AC.
2	0.676 AC.	40	0.858 AC.
3	0.557 AC.	41	0.426 AC.
4	1.078 AC.	42	0.392 AC.
5	0.346 AC.	43	0.417 AC.
6	0.393 AC.	44	0.402 AC.
7	0.412 AC.	45	0.406 AC.
8	0.426 AC.	46	0.524 AC.
9	0.749 AC.	47	0.678 AC.
10	0.991 AC.	48	0.846 AC.
11	0.893 AC.	49	0.552 AC.
12	0.523 AC.	50	0.746 AC.
13	0.426 AC.	51	0.703 AC.
14	0.437 AC.	52	0.481 AC.
15	0.842 AC.	53	0.820 AC.
16	0.654 AC.	54	0.779 AC.
17	0.634 AC.	55	1.557 AC.
18	1.225 AC.	56	0.885 AC.
19	0.447 AC.	57	0.600 AC.
20	0.466 AC.	58	0.624 AC.
21	0.565 AC.	58A	0.486 AC.
22	0.459 AC.	59	1.037 AC.
23	0.666 AC.	60	1.430 AC.
24	0.477 AC.	61	0.501 AC.
25	0.804 AC.	62	0.583 AC.
26	0.660 AC.	63	0.773 AC.
27	0.685 AC.	64	0.631 AC.
28	0.520 AC.	65	0.557 AC.
29	0.517 AC.	66	0.505 AC.
30	0.594 AC.	67	0.518 AC.
31	0.393 AC.	68	0.764 AC.
32	0.664 AC.	69	0.916 AC.
33	0.757 AC.	70	0.556 AC.
34	0.744 AC.	71	0.912 AC.
35	0.520 AC.	72	0.416 AC.
36	0.516 AC.	73	0.647 AC.
37	0.614 AC.	74	0.650 AC.
38	0.868 AC.	75	0.676 AC.
		76	0.631 AC.



LEGEND:
 EIP - Existing iron pin
 NIP - New iron pin
 Mon. - Concrete monument
 -x-x- Fenced line
 ---- Calculated line

County of Allegheny, State of North Carolina
 I, Bobby J. Oliver certify that this map was drawn by me or under my direct supervision from an actual survey by me or under my direct supervision and that the ratio of precision as calculated by latitudes and departures is 1:5630 and that this map was prepared in accordance with G.S. 47-30 as amended. Witness my hand and seal this the 7th day of Sept, 1988
Bobby J. Oliver RLS. L-1276



I, William D. Bare a notary public of Allegheny County, State of North Carolina certify that Bobby J. Oliver a registered land surveyor did personally appear before me this day and acknowledged the execution of the foregoing instrument, witness my hand and seal this the 7th day of Sept, 1988.

William D. Bare Notary Public
 My commission expires 8-27-91

North Carolina - Allegheny County
 The foregoing certificate (es) of William D. Bare Notary Public - Allegheny County, NC is (are) certified to be correct. This instrument was presented for registration this day and hour and duly recorded in the Office of the Register of Deeds of Allegheny County, North Carolina in Book # 7 page 149 this 15th day of September A.D. 1988 at 11:45 o'clock A.
John Michael Caudill
 Register of Deeds

Plat of RIVER PARADISE
 An Elias Legra Development

Piney Creek TOWNSHIP Allegheny COUNTY STATE N. C.

DRAWN BY: <u>wdb</u>	APPROVED BY: <u>bjo</u>	JOB NUMBER:
DATE: <u>Sept. 7, 1988</u>	DEED REFERENCE BOOK _____ PAGE _____	MAP NUMBER
SCALE: 1" = 200 FEET	BOBBY J. OLIVER & ASSOCIATES, P.A. JEFFERSON, NORTH CAROLINA 28640 Telephone: 919/246-9175 Registered Land Surveyor, L-1276	

0' 200' 400' 600' 800' 1000'

NOTES:
 (1) BEARINGS RELATIVE TO 1980 MAGNETIC NORTH.
 (2) PRECISION OF SURVEY 1:5630.
 (3) ALL ROADS HAVE A PERMANENT 60.0 FT. R/W UNLESS OTHERWISE DENOTED. TRACTS SUBJECT TO EASEMENTS AS SHOWN.
 (4) ALL ROADS ARE PRIVATELY MAINTAINED AND FALL WITHIN THE CONFINES OF THE SUBDIVISION.
 (5) ALL TRACTS SUBJECT TO UTILITY EASEMENTS ALONG ROAD RIGHT-OF-WAYS AND EXISTING UTILITY LINES.
 (6) LOTS 16 AND 58 SUBJECT TO 30.0 FT. R/W AS SHOWN.